

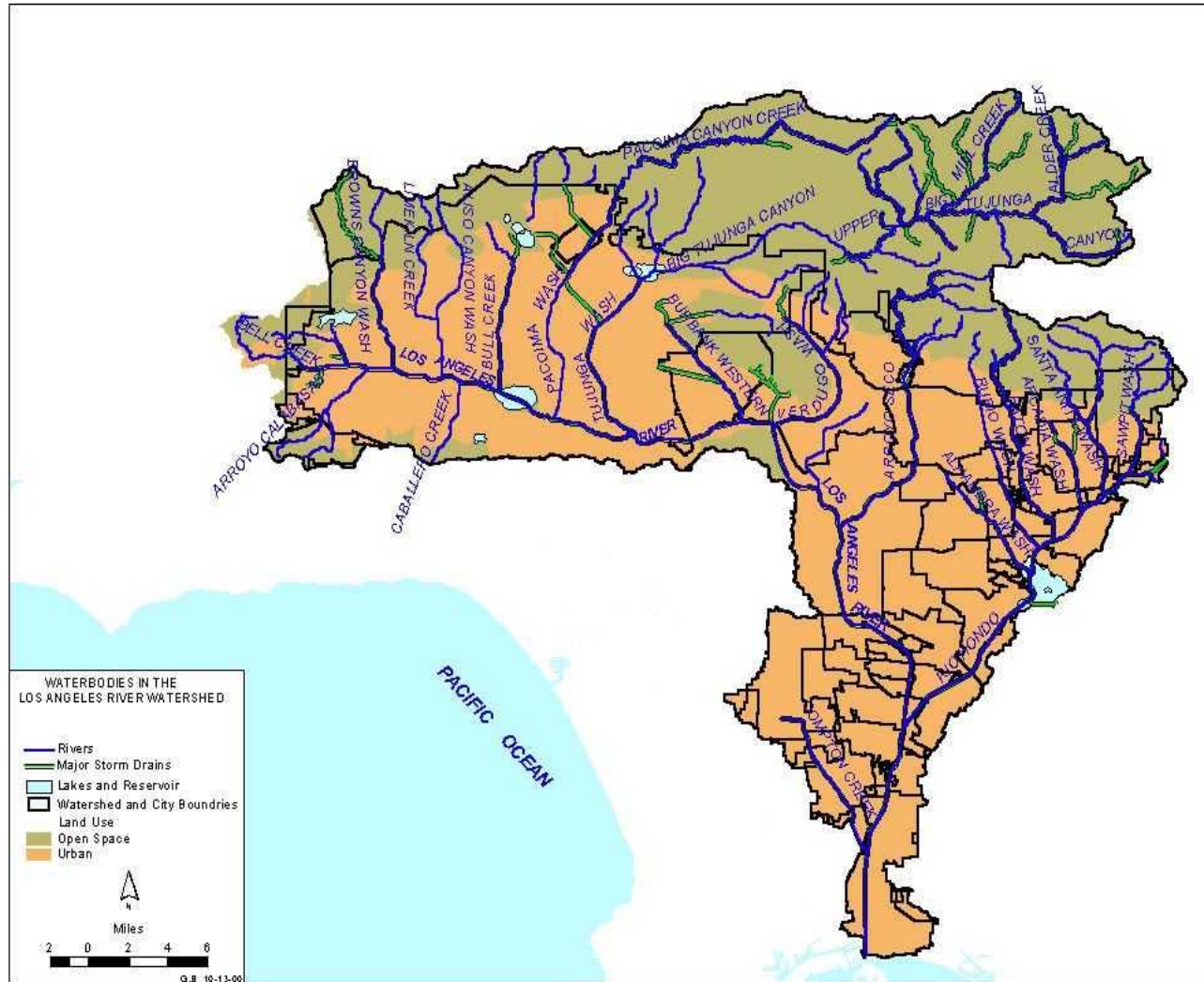
Trash TMDL for the Los Angeles River Watershed

Approved by the State Board
April 15, 2008

Background

LA River 303(d) Listed for Trash	1998
Consent decree <i>Baykeeper v. EPA</i>	1999
Previous Trash TMDL Adopted by RB	Sept. 2001
Previous Trash TMDL Approved by SWRCB	February 2002
Previous Trash TMDL Approved by OAL	July 2002
Previous Trash TMDL Approved by EPA	Aug. 2002
Settlement Agreement w/ Los Angeles City and County □	Sept. 2003
Ruling on <i>Cities of Arcadia v. RWQCB</i> final	June 2006
Trash TMDL set aside by Regional Board per court order	June 2006
LARWQCB adopted new trash TMDL	August 9, 2007

Los Angeles River Watershed





Los Angeles River Debris Summary

Tons of debris: City of Long Beach

Storm Year	Total
2001- 2002	1,858
2002- 2003	4,630
2003- 2004	2,636
2004-2005	12,255
2005- 2006	2,591



Affected Reaches

- ★ Los Angeles River (Reaches 1, 2, 3, 4 & 5)
- ★ Los Angeles River Estuary
- ★ Los Angeles River Tributaries
 - ★ Burbank Western Channel
 - ★ Verdugo Wash (Reaches 1 & 2)
 - ★ Arroyo Seco (Reaches 1 & 2)
 - ★ Rio Hondo Reach 1
- ★ Peck Road Lake, Echo Park Lake & Lincoln Park Lake



2007 Trash TMDL

- ★ Similar Approach to 2001 Trash TMDL
 - ★ First time, less CEQA analysis -- treated more like a neg dec-level SED
- ★ 2007 -- Extensive California Environmental Quality Act (CEQA) Analysis
- ★ “Certified Regulatory Program”
 - ★ Program level analysis
 - ★ Reasonably foreseeable means of compliance
 - ★ Potential adverse environmental impacts
 - ★ Mitigation measures
 - ★ Findings & Statements of Overriding Considerations
- ★ Updated Baseline Waste Load Allocations
- ★ Same Compliance dates



Water Quality Objectives

*Water Quality Control Plan, Los Angeles
Region*

Floating Material

- ★ **“Waters shall not contain floating materials including solids, liquids, foams, and scum in concentrations that cause nuisance or adversely affect beneficial use.”**

Solid, Suspended, or Settleable Materials

- ★ **“Waters shall not contain suspended or settleable material in concentrations that cause nuisance or adversely affect beneficial uses.”**



Zero Numeric Target

- ★ Consistent with Basin Plan, other laws
- ★ Regional Board precedent
- ★ State Board approved
- ★ OAL & EPA Approved
- ★ Upheld by Court of Appeals
- ★ Trash and litter ordinances prohibit all trash

Sources of Trash

- ★ Storm drain discharges - primary source of trash in Los Angeles River



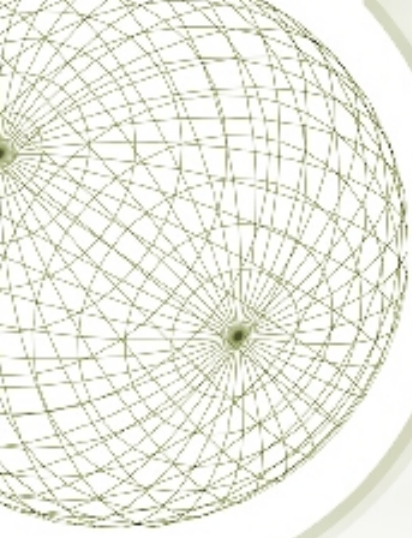


Waste Load Allocations

- ★ **Baseline WLA =**
Summation of: Land use area x trash generated (by land use)
- ★ **Interim WLAs =**
% reductions of the Baseline WLA
- ★ **Final WLA = Numeric Target = 0**

Key Compliance Dates

Date	WLA	Compliance Point
Sep 30, 2008	60% of Baseline WLA	60% of the baseline
Sep 30, 2009	50% of Baseline WLA	55% of the baseline
Sep 30, 2010	40% of Baseline WLA	50% of the baseline (re-opener)
Sep 30, 2011	30% of Baseline WLA	40% of the baseline
Sep 30, 2012	20% of Baseline WLA	30% of the baseline
Sep 30, 2013	10% of Baseline WLA	20% of the baseline
Sep 30, 2014	0% of Baseline WLA	10% of the baseline
Sep 30, 2015	0% of Baseline WLA	3.3% of the baseline
Sep 30, 2016	0% of Baseline WLA	0% of the baseline



Compliance Strategies

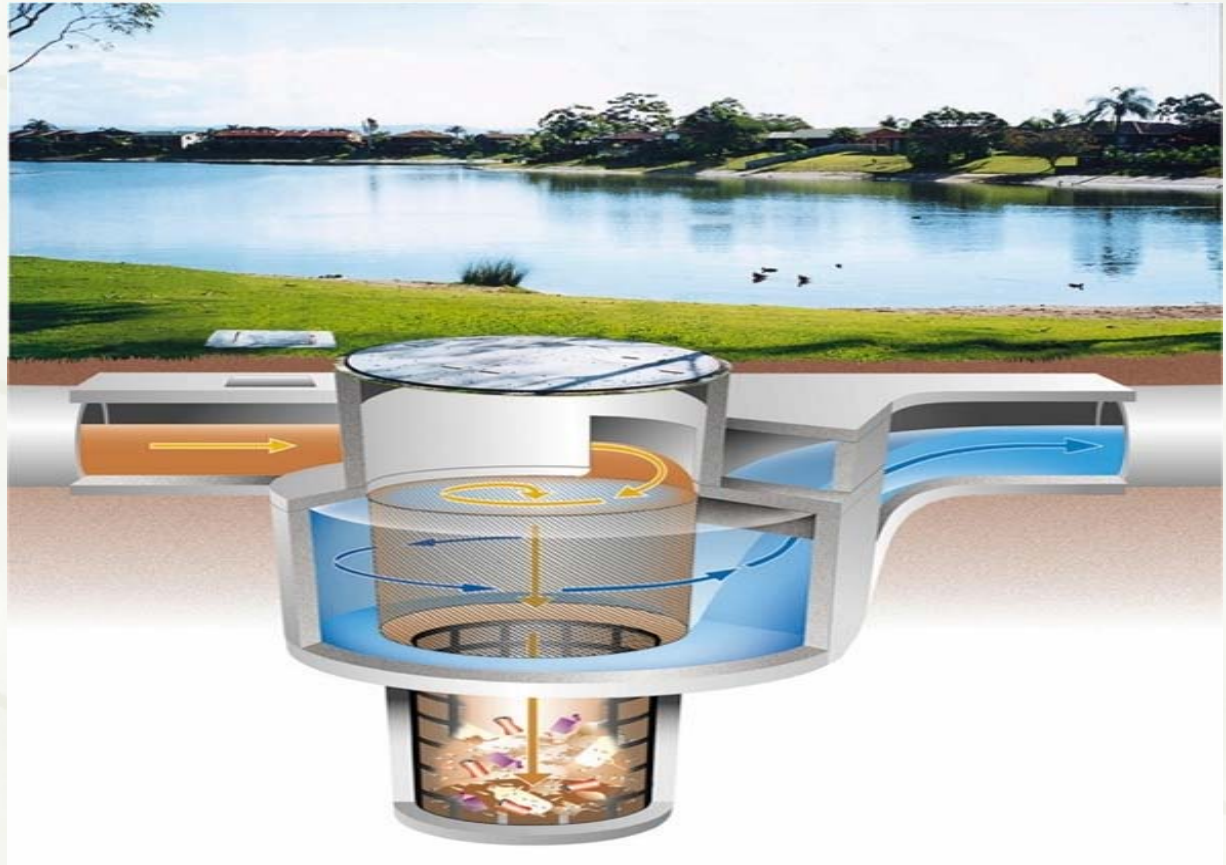
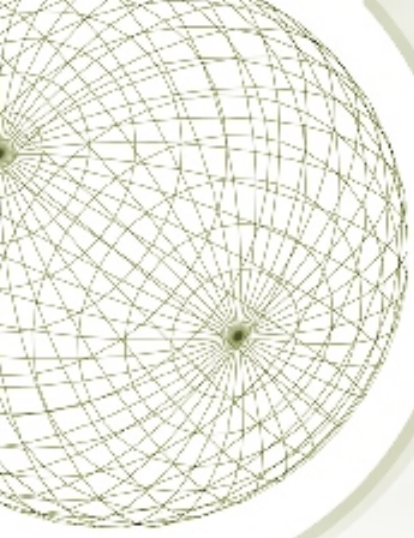
- ★ Full capture systems
- ★ Partial capture systems
- ★ Institutional controls



Certified Full Capture Systems

- ◆ Hamilton Bowl Trash Nets
 - ◆ City of Signal Hill/ LACDPW
- ◆ Gross Solids Removal Devices (two types)
 - ◆ California Department of Transportation
- ◆ Catch Basin Brush Inserts & Mesh Screens
 - ◆ Cities of Burbank, Glendale, La Canada Flintridge & Pasadena
- ◆ Catch Basin Insert Screens (two designs)
 - ◆ City of Los Angeles
- ◆ Connector Pipe Screen
 - ◆ County of Los Angeles

Vortex Separation System

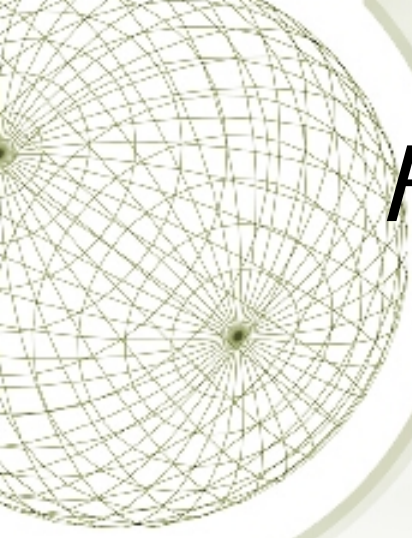


Gross Solids Removal Device



Catch Basin Brushes & Mesh Screen





Horizontal & Vertical Screen Inserts



Connector pipe screen device



Trash TMDL Compliance Dates

Year	2001 Trash TMDL	2007 Trash TMDL
2005	No compliance point	No compliance point
2006	80% of Baseline WLA	No compliance point
2007	70% of Baseline WLA	No compliance point
2008	60% of Baseline WLA	60% of Baseline WLA
2009	50% of Baseline WLA	55% of Baseline WLA
2010	40% of Baseline WLA	50% of Baseline WLA
2011	30% of Baseline WLA	40% of Baseline WLA
2012	20% of Baseline WLA	30% of Baseline WLA
2013	10% of Baseline WLA	20% of Baseline WLA
2014	3.3% of Baseline WLA	10% of Baseline WLA
2015	0% of Baseline WLA	3.3% of Baseline WLA
2016	Full Compliance	0% of Baseline WLA

A decorative graphic in the top-left corner consisting of a wireframe sphere with a grid of lines, partially enclosed by a white circular arc.

Conclusion and Questions

- ★ State Board Approved this TMDL

- ★ Questions?